

Addressing Victorian priorities for Elder abuse: A Community Action Plan

Briony Dow, Ellen Gaffy and Kerry Hwang

Funded by Gandel Philanthropy

Elder abuse in Victoria



Serious problem in Victoria



Addressed in the Victorian Royal Commission into Family Violence



Increasing media and societal attention



Considerable government and philanthropic responses implemented

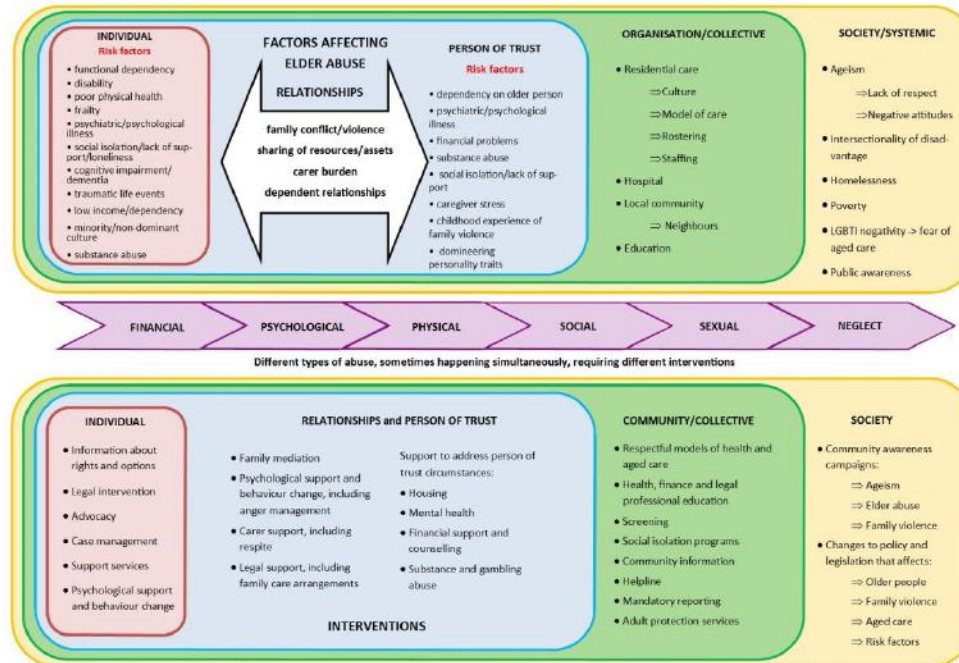


Complexity of elder abuse means that it is difficult to know what the gaps and priorities for action are

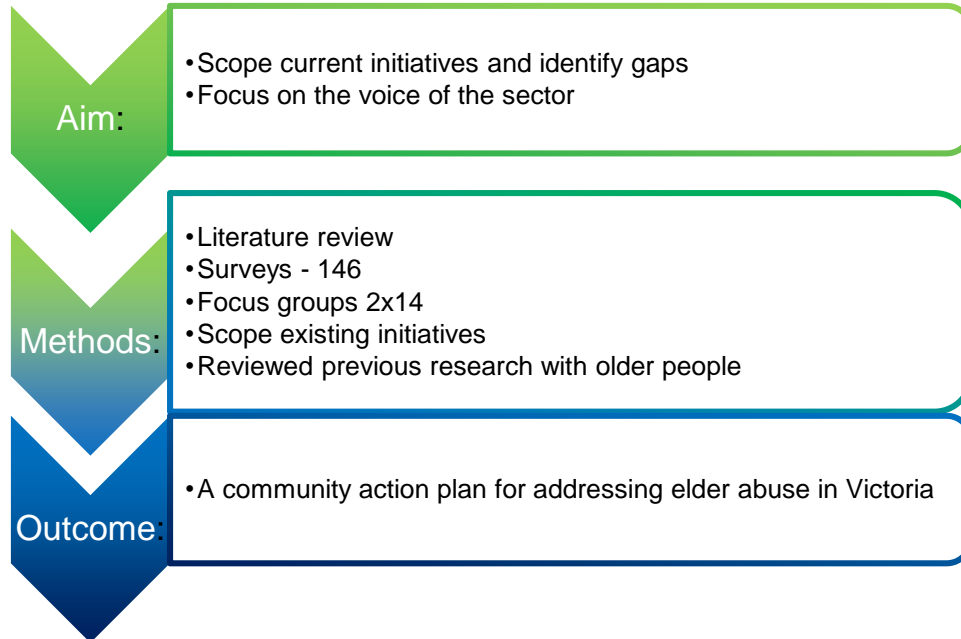


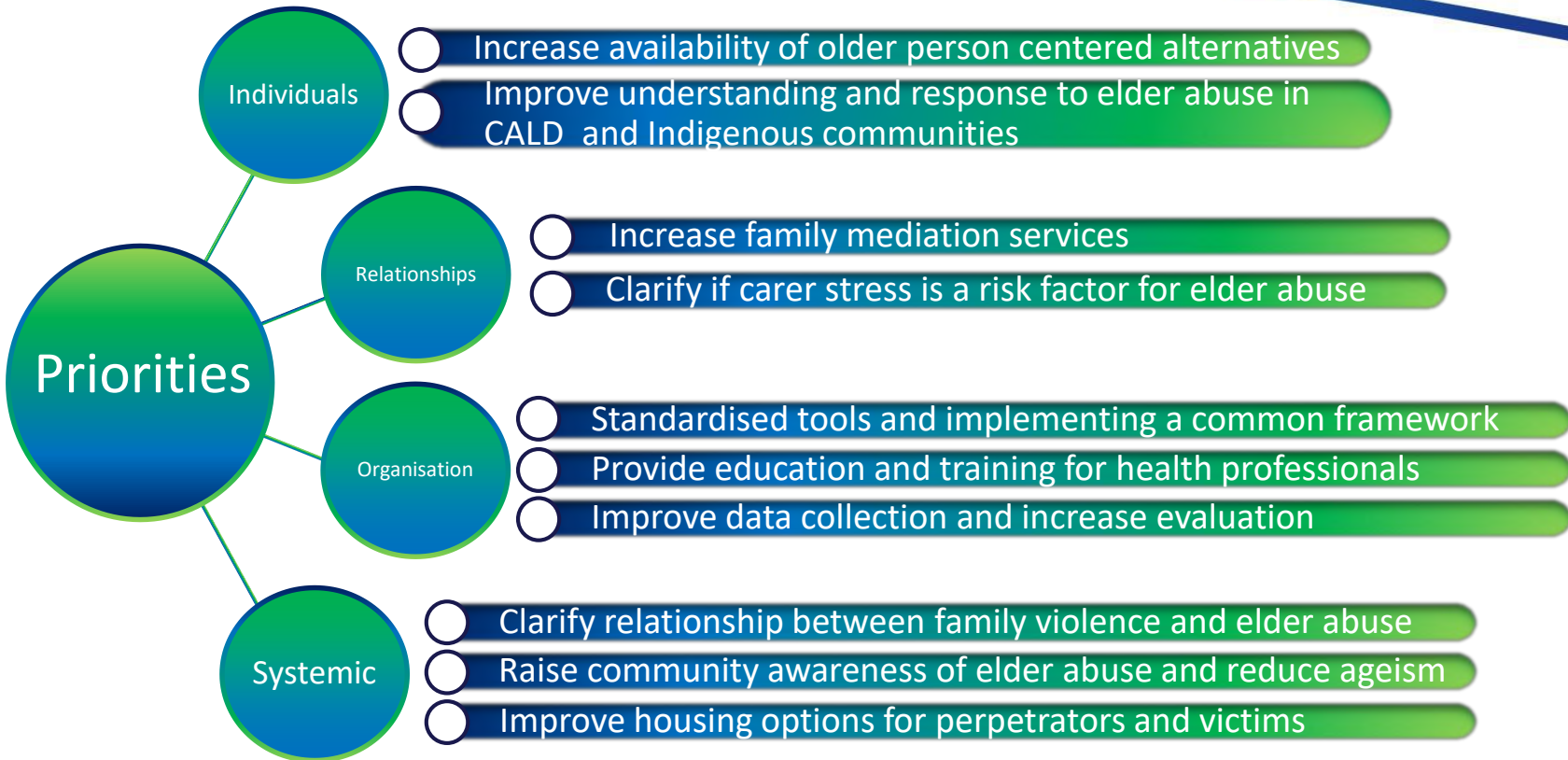
How can we address the complexity of elder abuse?

The complexity of elder abuse: risk factors and interventions

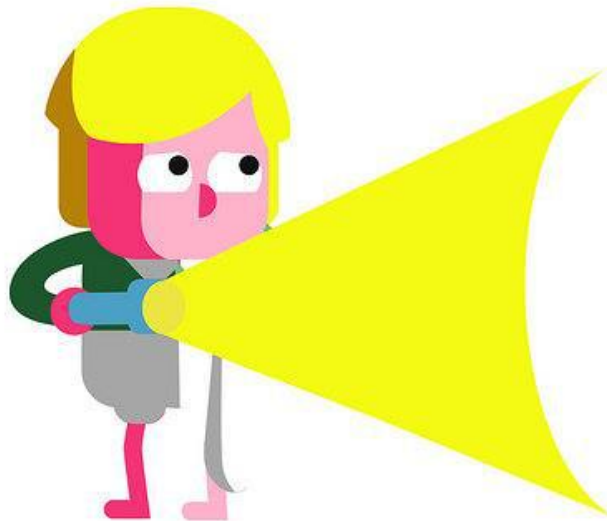


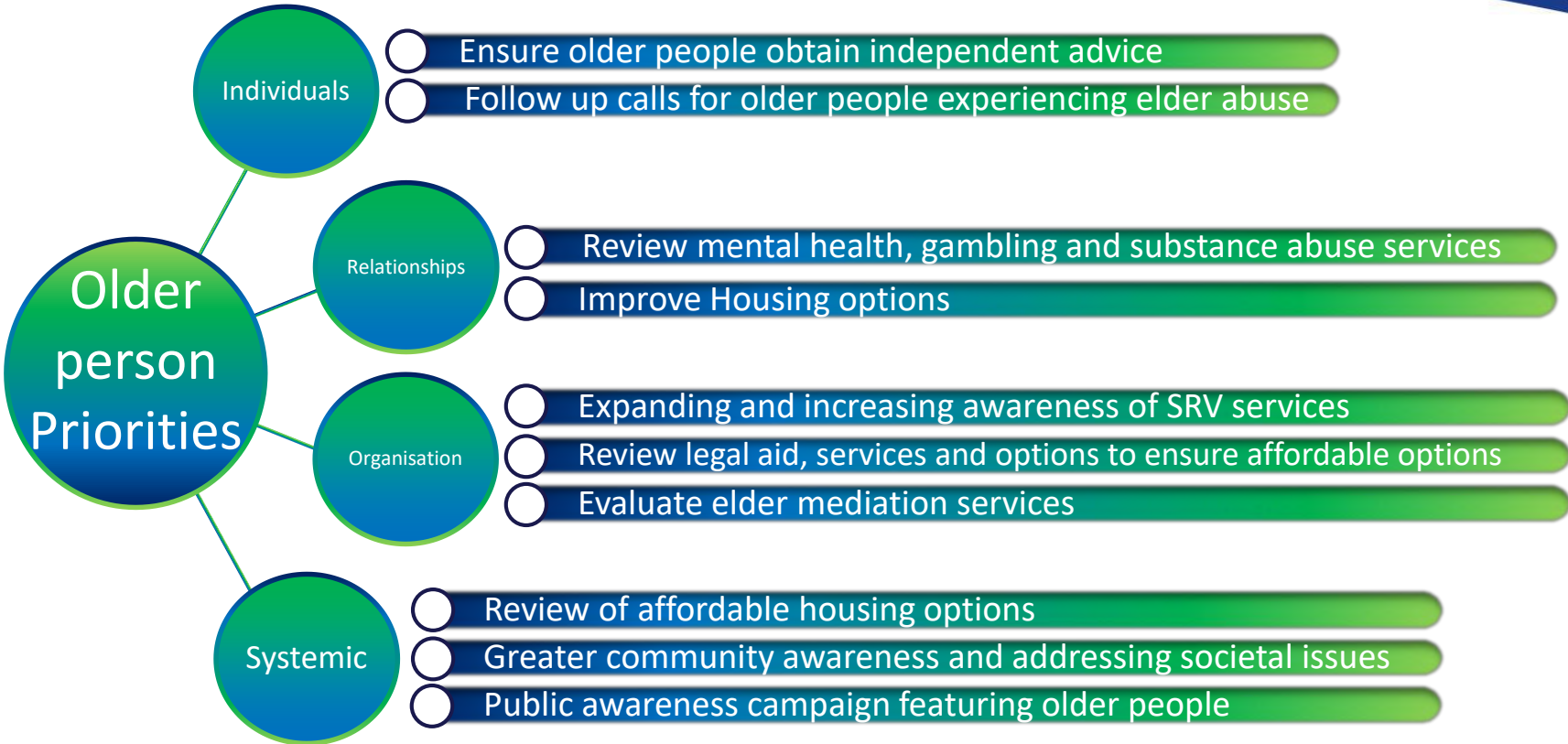
Developing an action plan for Victoria

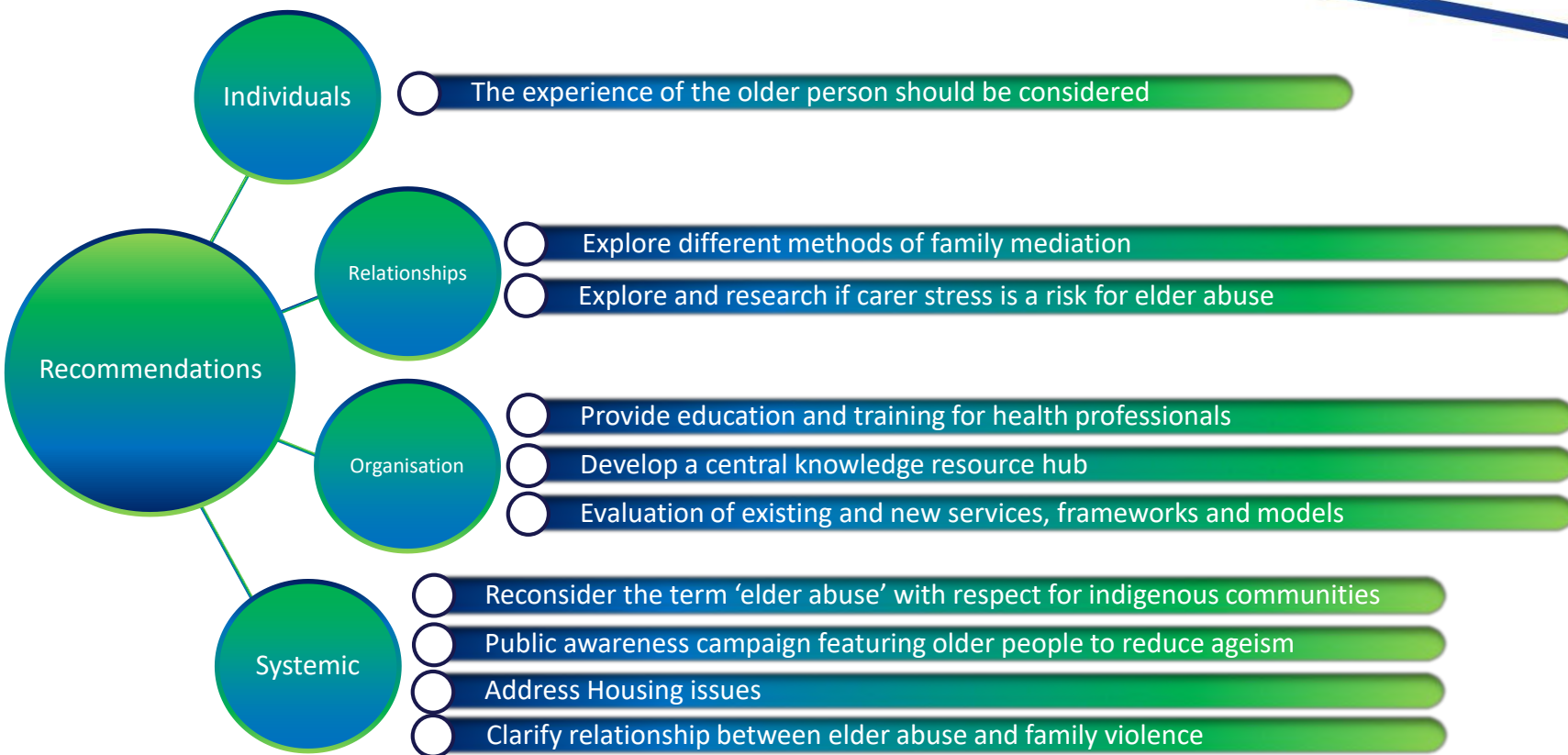




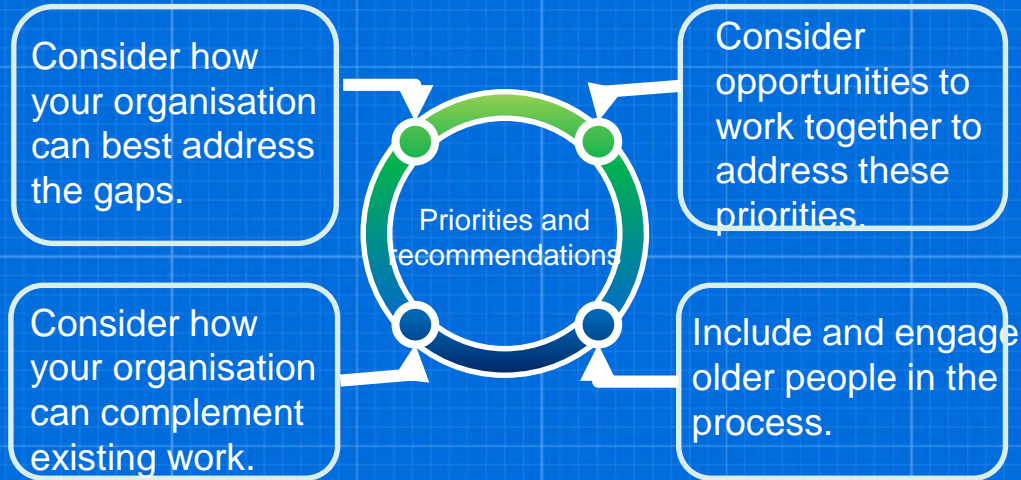
Scoping existing initiatives – priorities to recommendations







Action plan implementation

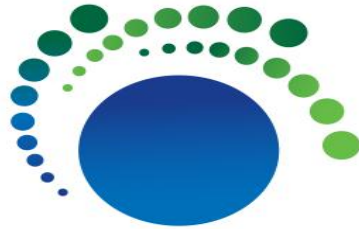


NARI team:

- Launch and media
- Promote with government and philanthropy
- Further develop projects and identify partners
- Already working on a number of priority areas
 - Definition with AIFS
 - Screening tools
 - Older people's priorities

Acknowledgments

- Gandel Philanthropy
- Melbourne Social Equity Institute
- Seniors' Rights Victoria Round Table
- Advisory Committee members
 - Jenny Blakey (SRV)
 - Alexandra White (Gandel Philanthropy)
 - Megan O'Brien (St Vincents)
 - John Chesterman (OPA)
 - Fiona York (HAAG)
 - Rachel Carson (AIFS)
- Melanie Joosten
- Survey and focus group participants



NARI
NATIONAL AGEING
RESEARCH INSTITUTE

Bringing research to life