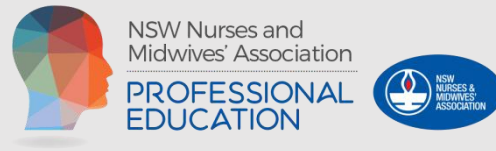
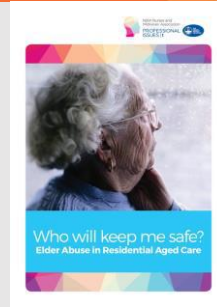


Elder abuse in residential aged care – a workforce perspective

Helen Macukewicz, NSW Nurses and Midwives Association

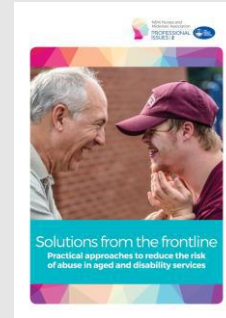


NSW has the highest number of RACFs across Australia



Lower levels of training than 2012

The age of people accommodated is increasing



Fewer registered nurses than 2012

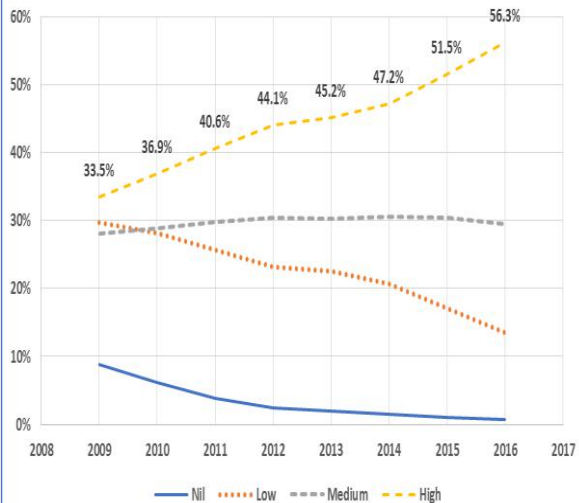
More people have dementia

More reliance on unlicensed and unregulated care workers

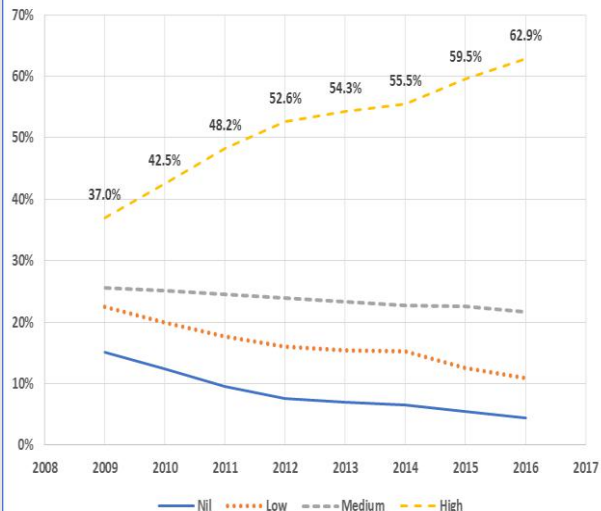


Fewer employees providing direct care

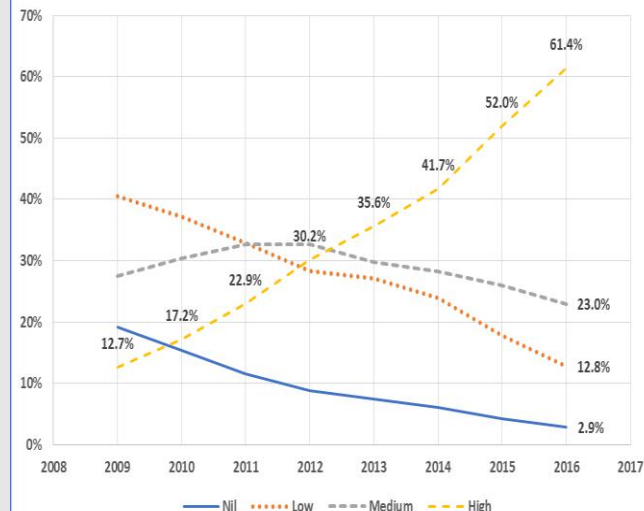
Proportion of ADL domain classification levels



Proportion of BEH domain classification levels



Proportion of CHC domain classification levels



Taken from Applied Aged Care Solutions (2017) **REVIEW OF THE AGED CARE FUNDING INSTRUMENT REPORT Part 1**



Who will keep me safe?
Elder Abuse in Residential Aged Care




Solutions from the frontline
Practical approaches to reduce the risk
of abuse in aged and disability services



The state of medication in
NSW residential aged care

Results of a NSW Nurses & Midwives' Association member survey



Almost one third witnessed resident on resident abuse at least once a week

A third witnessed abuse either to themselves or residents on every shift

90% had been subjected to aggression from residents

Insufficient numbers of staff (75%); fear of reprisals (61%); inadequate training (54%) and insufficient skill mix (47%) were the main causal factors

“There is a need for much higher level of staff in aged care. . . . This is a speciality area that requires highly trained staff.” REGISTERED NURSE

“One of my colleagues grabbed a resident so hard that it tore his skin off and her handmark print was on his arm and thigh. I reported it but the management told me to shut up or I'd lose my job.”

Assistant in Nursing RACF

“Staff take shortcuts and skip care duties to get duties completed within a certain timeframe. There are not enough staff to deliver quality care.”

ASSISTANT IN NURSING - AGED CARE

Changes to the Aged Care Act 1997

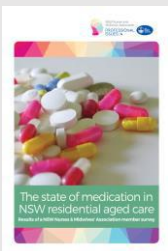
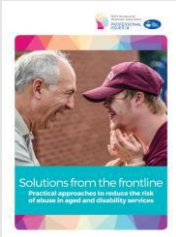
- Mandated staffing and skills mix
- Mandated training requirements
- Enhanced reporting of incidents and protection for workers

Federal law that defines elder abuse better

Recognition of the link between safe staffing and incidence of abuse

Licensing of unregulated care workers

Enhanced monitoring by the AACQA



Questions?